



CAPITALINKS

CL1009

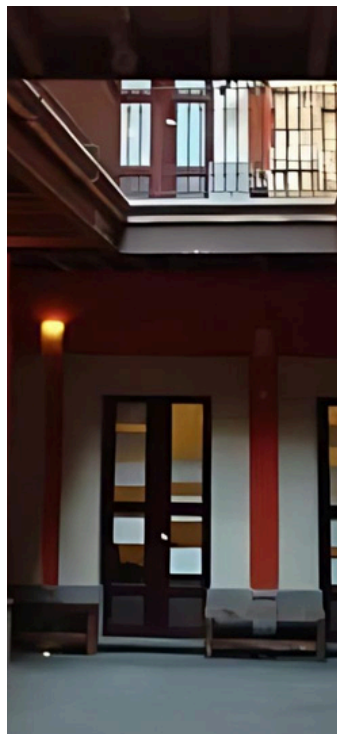
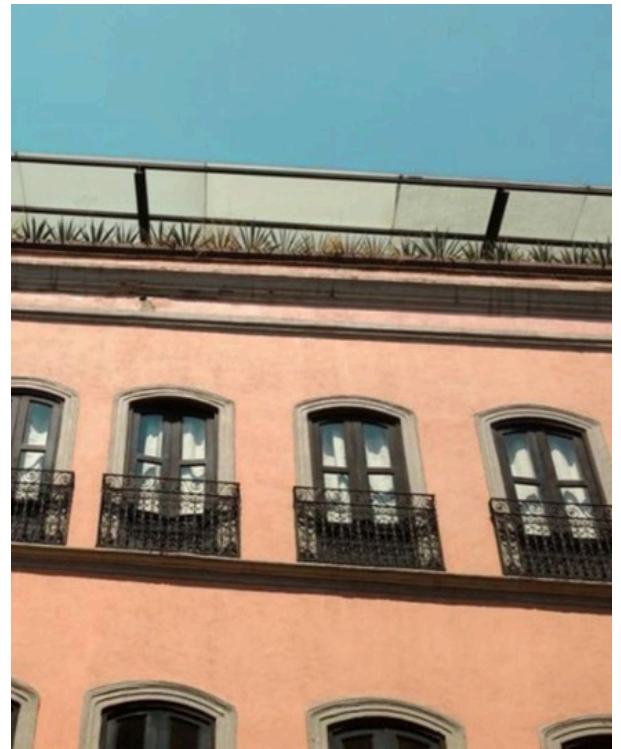
EDIFICIO

COMERCIAL

CUAUHTÉMOC CENTRO
HISTÓRICO, CDMX

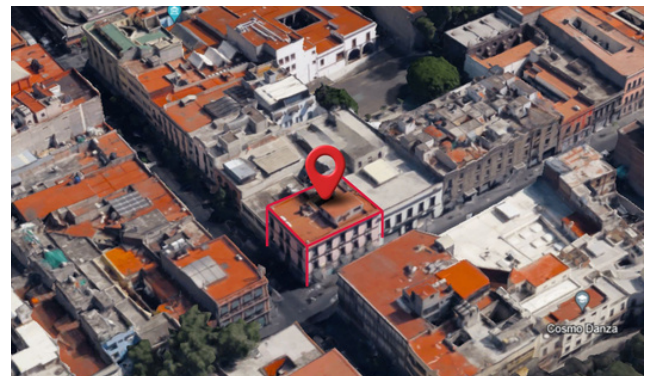
PRECIO SALIDA	\$55,000,000
TERRENO	528 m ²
CONSTRUCCIÓN	1350 m ²
m ² RENTABLES	1,150 m ²

Centro Histórico, CDMX



USO DE SUELO

HABITACIONAL/
COMERCIAL



Av. Paseo de las Palmas 239 Lomas de Chapultepec,
Miguel Hidalgo, 11000 Ciudad de México, CDMX



55 7840 3548
55 19 52 36 18



alexmompala@capitalinks.com.mx

