



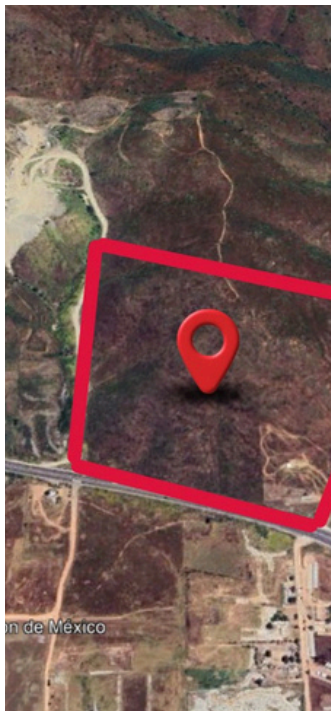
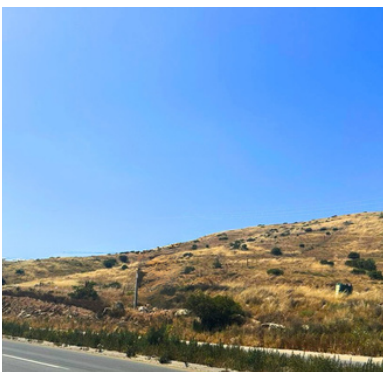
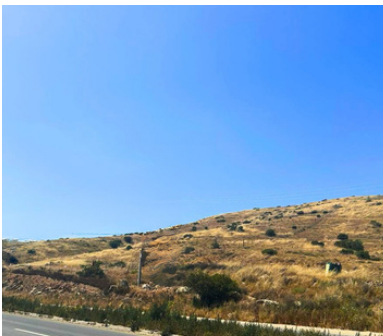
# CAPITALINKS CL1061 — TERRENO

INDUSTRIAL

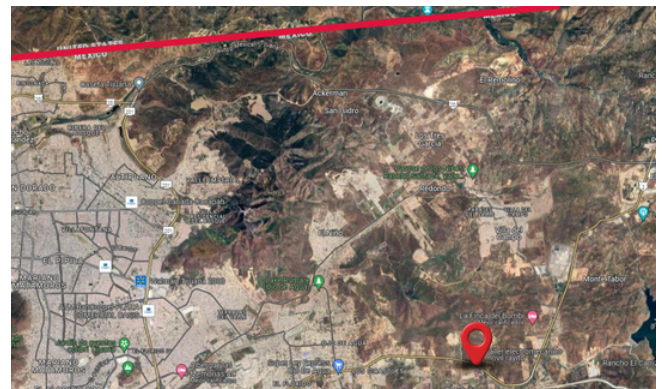
TECATE- TIJUANA, BAJA CALIFORNIA

PRECIO SALIDA	\$15,000,000 USD
TERRENO	20 ha
PRECIO x m <sup>2</sup>	75 USD x m <sup>2</sup>

## Tecate- Tijuana, Baja California



USO DE SUELO INDUSTRIAL



Av. Paseo de las Palmas 239 Lomas de Chapultepec, Miguel Hidalgo, 11000 Ciudad de México, CDMX



55 7840 3548  
55 19 52 36 18



alexmompala@capitalinks.com.mx

