



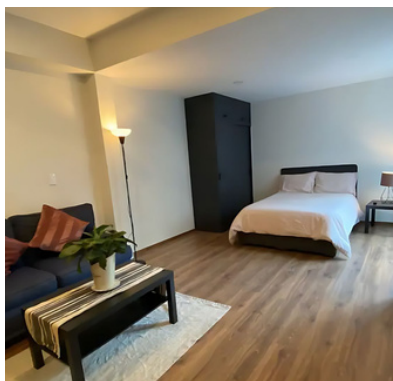
# CAPITALINKS CL1022 — EDIFICIO

PARA AIRBNB

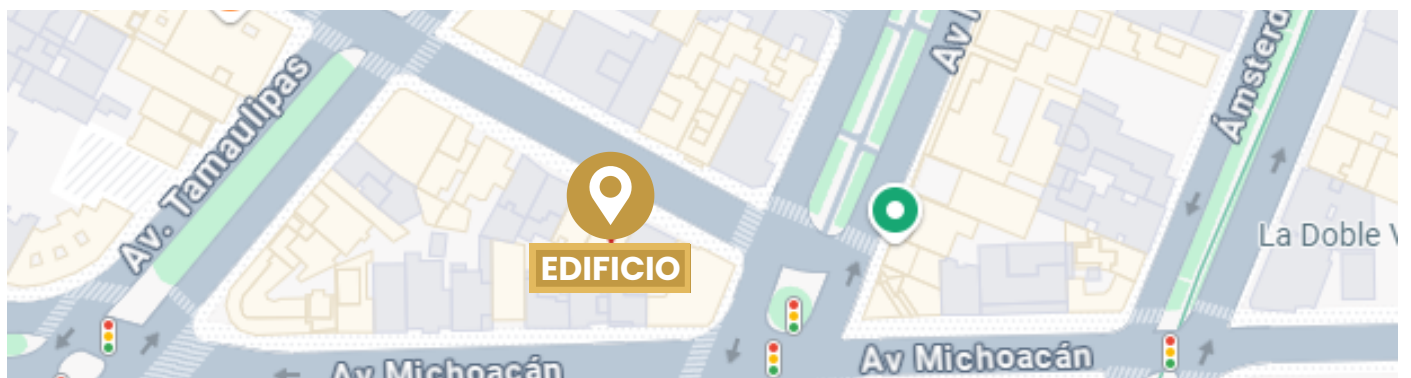
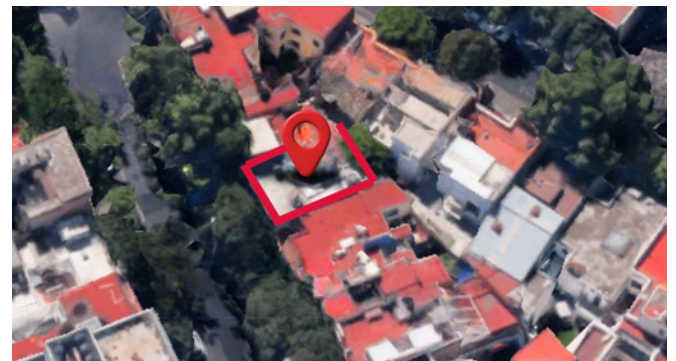
CONDESA, CDMX

|                          |                    |
|--------------------------|--------------------|
| PRECIO SALIDA            | \$28,000,000       |
| TERRENO                  | 127 m <sup>2</sup> |
| CONSTRUCCIÓN             | 375 m <sup>2</sup> |
| m <sup>2</sup> RENTABLES | 300 m <sup>2</sup> |
| GENERANDO RENTAS         | \$11,000 USD       |

Condesa, CDMX



|              |              |
|--------------|--------------|
| USO DE SUELO | HABITACIONAL |
| CAP RATE     | 8.4%         |



Av. Paseo de las Palmas 239 Lomas de Chapultepec,  
Miguel Hidalgo, 11000 Ciudad de México, CDMX



55 7840 3548  
55 19 52 36 18



alexmompala@capitalinks.com.mx

