

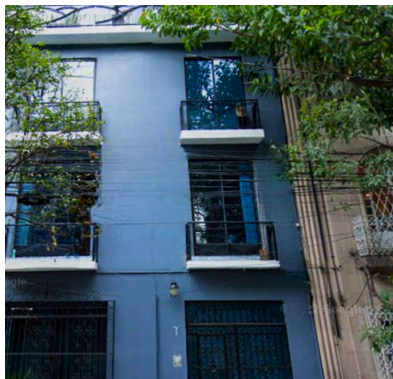
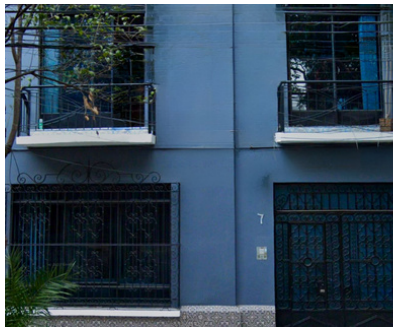


CAPITALINKS CL1023 — EDIFICIO

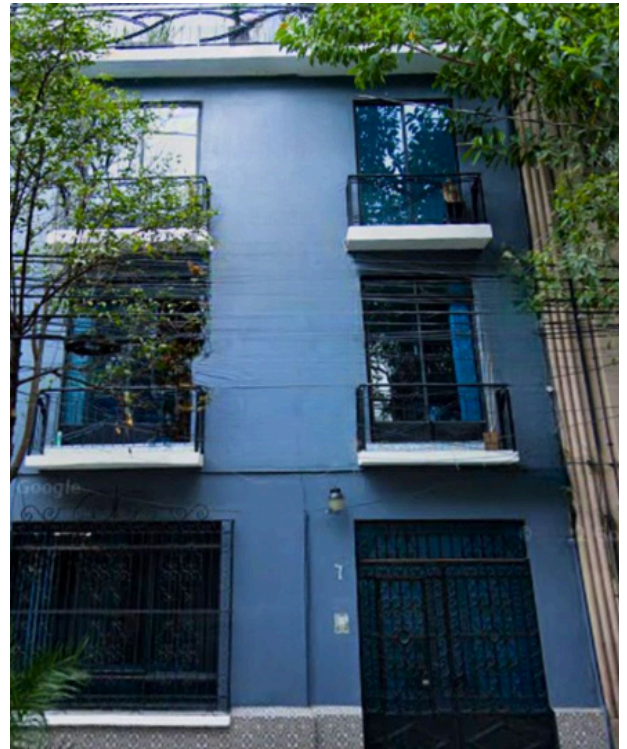
PARA AIRBNB

CONDESA, CDMX

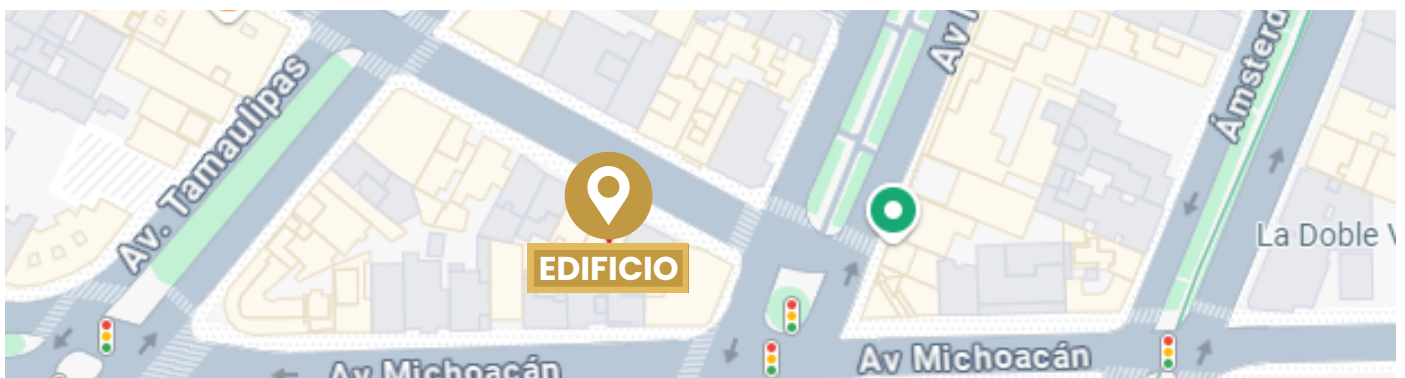
PRECIO SALIDA	\$70,000,000
TERRENO	300 m ²
CONSTRUCCIÓN	1,200 m ²
m ² RENTABLES	1,020 m ²
GENERANDO RENTAS	\$650,000



Condesa, CDMX



USO DE SUELO	COMERCIAL /HABITACIONAL
CAP RATE	11%



Av. Paseo de las Palmas 239 Lomas de Chapultepec,
Miguel Hidalgo, 11000 Ciudad de México, CDMX



55 7840 3548
55 19 52 36 18



alexmompala@capitalinks.com.mx

