



CAPITALINKS

CL1083

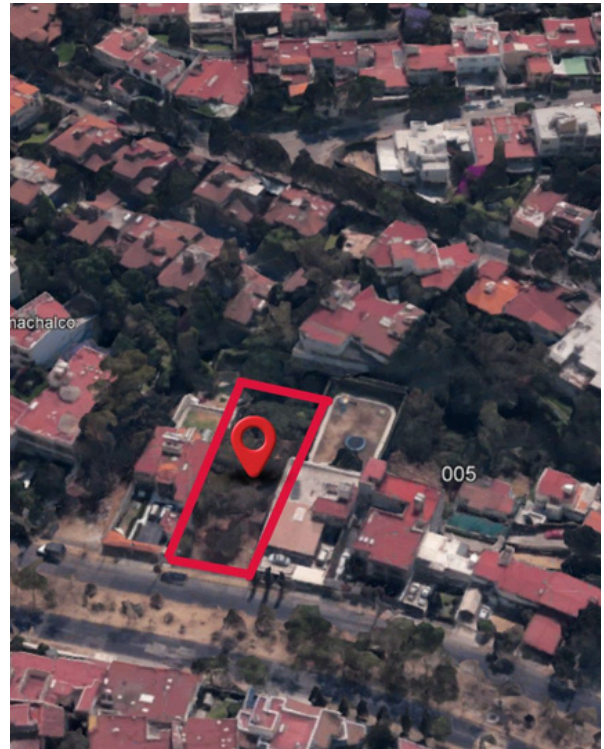
TERRENO

HABITACIONAL

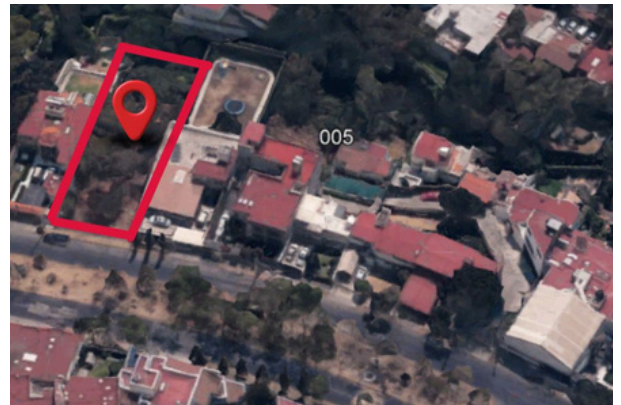
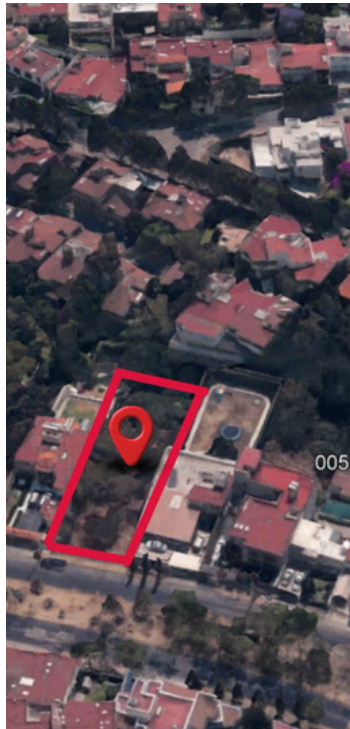
AV. DE LAS FUENTES, LOMAS DE
TECAMACHALCO

PRECIO SALIDA	\$20,000,000
TERRENO	1095 m ²
PRECIO x m ²	\$18,265

Lomas de Tecamachalco, Edo. Méx.



USO DE SUELO HABITACIONAL



Av. Paseo de las Palmas 239 Lomas de Chapultepec,
Miguel Hidalgo, 11000 Ciudad de México, CDMX



55 7840 3548
55 19 52 36 18



alexmompala@capitalinks.com.mx

